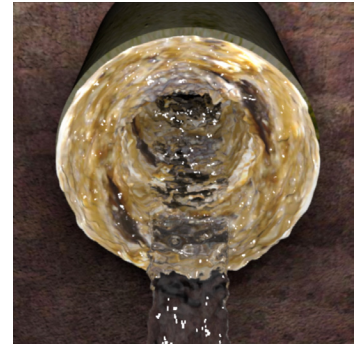


EHC-33™

Industrial Strength Grease Control Bacteria
For Sewer Lines and Lift Stations

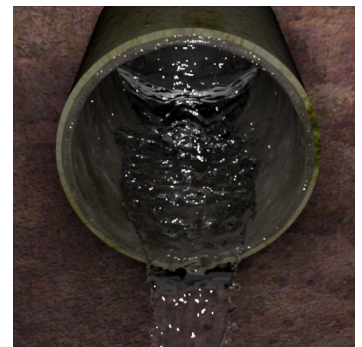
GREASE CONTROL

Sewer grease solidifies in sewer lines, reduces flow capacity and eventually blocks the flow leading to costly sanitary sewer overflows (SSOs).



Industrial strength EHC-33™ Grease Control Bacteria consumes sewer grease.

Just open the manhole and drop the ready-to-use packet into the flow of the line.



Features:

- EHC-33™ consumes sewer grease (combination of proteins, fats and carbohydrates)
- Packaged in convenient, ready-to-use 1/2-lb water-soluble pouches
- Lives and reproduces in an environment containing no “free” or dissolved oxygen
- Environmentally friendly
- Available in 25-lb pail (Product# 103625)

Benefits:

- Reduces grease build-up in sewer lines and lift stations
- Establishes a biofilm which dramatically reduces line blockages and improves flow
- Easier and less frequent maintenance and clean-out
- Enhances BOD/COD/TSS removal
- Reduces hydrogen sulfide
- Improves system efficiency

EHC-33™ is a key part of our highly successful proactive grease control program.

Enviro-Health Corp.
(800) 314-3862
sales@ehcdirect.com

Directions for Use

Do not add to the treatment system at a location where toxic or otherwise adverse pH, dissolved oxygen or temperature conditions may exist at peak levels.

For optimal results the wastewater and treatment system should meet the following conditions:

	Optimum	Minimum
Influent pH	7.0	5.0
Dissolved oxygen, ppm	2.0+	1.0+
C/N/P ratio	100/10/1	100/5/1
Temperature, °C	30° (86° F)	10° (50° F)
Toxic metals, ppm (E.g., hex., chromium)	0	0

EHC-33™ Dosing Chart

Recommended Doses of EHC-33™ for Lift Stations, Force Mains & Siphons

Time of Treatment	Amount of Treatment	Details
For facilities having less than 50,000 gallons per day		
First 2 days	2 bags per day	Per 10,000 gallons of daily flow
Next 5 days	1 bag per day	Per 10,000 gallons of daily flow
Thereafter	2 bags per week	Per 10,000 gallons of daily flow
For facilities having less than 100,000 gallons per day		
First 2 days	8 bags per day	Per 100,000 gallons of daily flow
Next 5 days	3 bags per day	Per 100,000 gallons of daily flow
Thereafter	3 bags per week	Per 100,000 gallons of daily flow
For facilities having less than 300,000 gallons per day		
First 2 days	8 bags per day	Per 100,000 gallons of daily flow
Next 5 days	4 bags per day	Per 100,000 gallons of daily flow
Thereafter	6 bags per week	Per 100,000 gallons of daily flow

Recommended Doses of EHC-33™ for Gravity Mains & Feeder Lines

Daily treatment rate below is for four days per 500 foot section.

Once clean, switch to the maintenance dose for weekly treatment.

Weekly rate is per 1,000 feet of line.

Diameter of Line	Daily Treatment	Weekly Treatment
4"	1 bag	1 bag
6"	1 bag	1 bag
8"	2 bags	2 bags
10"	4 bags	3 bags
12"	5 bags	4 bags
14"	6 bags	5 bags
16"	8 bags	6 bags